

## 1. Health Professional Shortage Areas (HPSAs) Dental Care by County

**Source:** Rural Health Information Hub

**Link:** <https://www.ruralhealthinfo.org/charts/9>

**Definition:** HPSA indicates a critical lack of primary care, **dental**, or mental health providers as determined by provider-to-population ratios, high-need areas, and travel indicating to nearby care.

**Message:** *“Your [whole] county is designated as a health professional shortage area for dental care, which means families have more difficulty finding a dentist nearby. That’s why our in-school dental program is so valuable. We bring the care to the children at school.”*

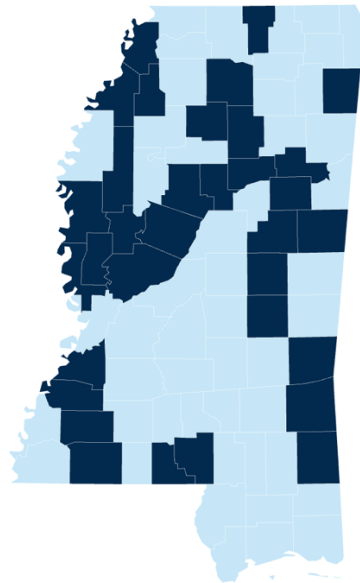
### Example:

Mississippi

#### Health Professional Shortage Areas: Dental Care, Geographic, by County, January 2026 - Mississippi

Back to U.S.

Nonmetro Metro **All**



Part of county that is geographic shortage area.

None Part Whole

## Statistics & Data Resources

### 2. Percent of Children Enrolled in Medicaid that Received Dental Care

Source: Centers for Medicare & Medicaid Services

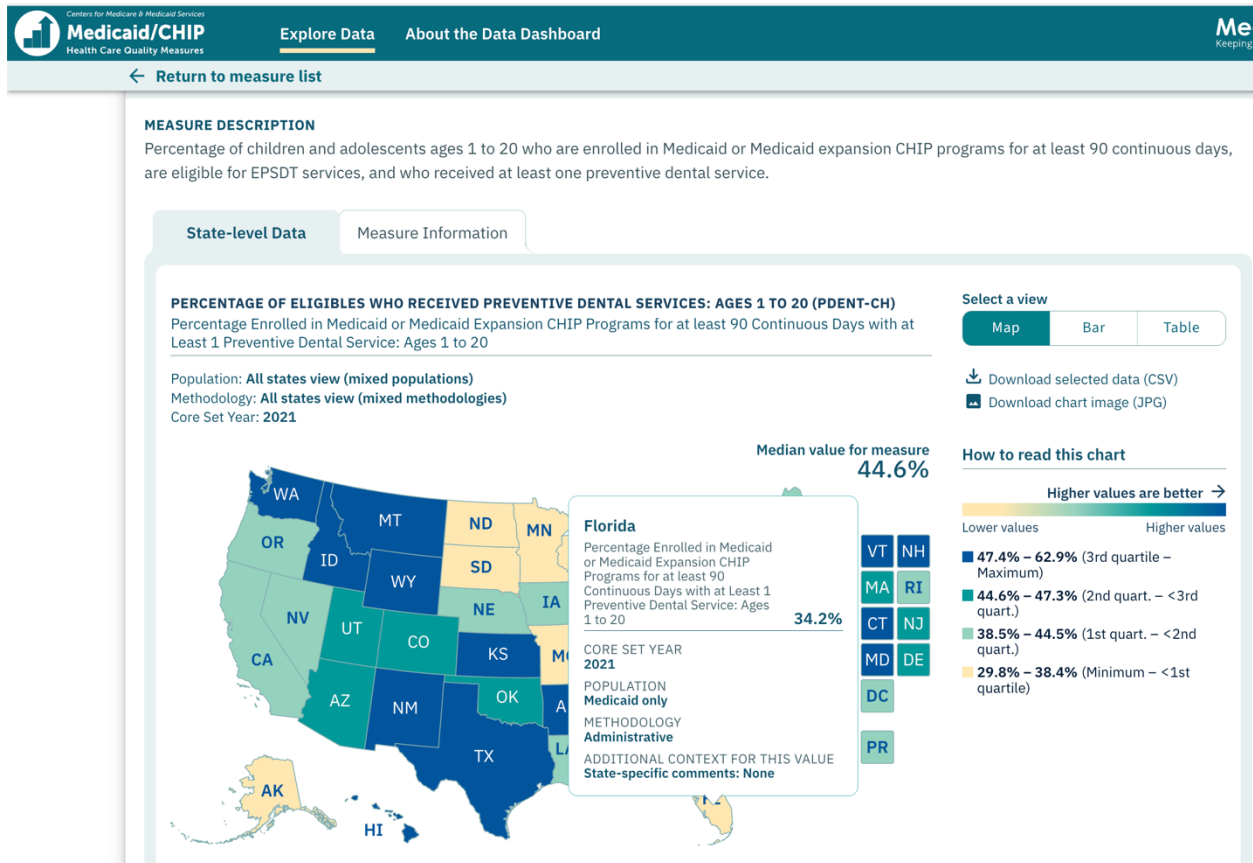
Link: <https://www.medicare.gov/medicaid/quality-of-care/core-set-data-dashboard/measure/Percentage-of-Eligibles-Who-Received-Preventive-Dental-Services-Ages-1-to-20-PDENT-CH?keywords=%5B%22158%22,%22851%22%5D&measure=HC.37&dataset=2021&measureView=state&population=999&methodology=999&dataView=pointInTime&chart=map&timePeriods=%5B%222021%22%5D>

**Definition:** Percentage of children and adolescents ages 1 to 20 who are enrolled in Medicaid or Medicaid expansion CHIP programs for at least 90 continuous days, are eligible for EPSDT services, and who received at least one preventive dental service.

NOTE: Subtract from 100 to calculate the % of Medicaid children who did NOT get care.

**Message:** “More than 65% of children in Florida who are covered by Medicaid still did not receive dental care. The in-school dental program may be their only access to care.”

**Example:**



### 3. Number/Percent of Children Enrolled in Medicaid

Source: KFF

Link: <https://www.kff.org/medicaid/state-indicator/medicaid-enrollees-by-age/?dataView=1&currentTimeframe=0&selectedDistributions=0-18&sortModel=%7B%22collid%22:%22Location%22,%22sort%22:%22asc%22%7D>

**Definition:** Percentage/Number of children ages 0 to 18 who are enrolled in Medicaid at any time during the calendar year.

NOTE: Toggle to see Number and Percent

**Message:** “More than 1.5 million children in Georgia are enrolled in Medicaid, which covers dental care, but we know more than half of those children not getting any dental care at all. Our program is an effective way to bring care to children who need it most – all at no cost to your school or to these families.”

#### Example:

**KFF** The independent source for health policy research, polling, and news. [Subscribe](#)

Topics ▾ Policy Research ▾ Polling ▾ Health News ▾ Data ▾

Home / State Health Facts / Medicaid & CHIP / Demographic and Health Status Characteristics of Medicaid Enrollees

### Medicaid Enrollees by Age

Timeframe: 2023

REFINE RESULTS

TIMEFRAME: 2023

DATA VIEW:  Percent  Number

DISTRIBUTIONS:  0-18  19-26  27-44  45-64  65 Plus  Unknown

TABLE | MAP | TREND GRAPH

Location	0-18
Arizona	910,500
Arkansas	459,700
California	4,624,300
Colorado	641,500
Connecticut	391,500
Delaware	125,700
District of Columbia	85,600
Florida	2,761,700
Georgia	1,532,000
Hawaii	154,200
Idaho	198,300
Illinois	1,316,200
Indiana	863,400
Iowa	352,100
Kansas	289,700
Kentucky	588,000